

Re-imagining Public Spaces

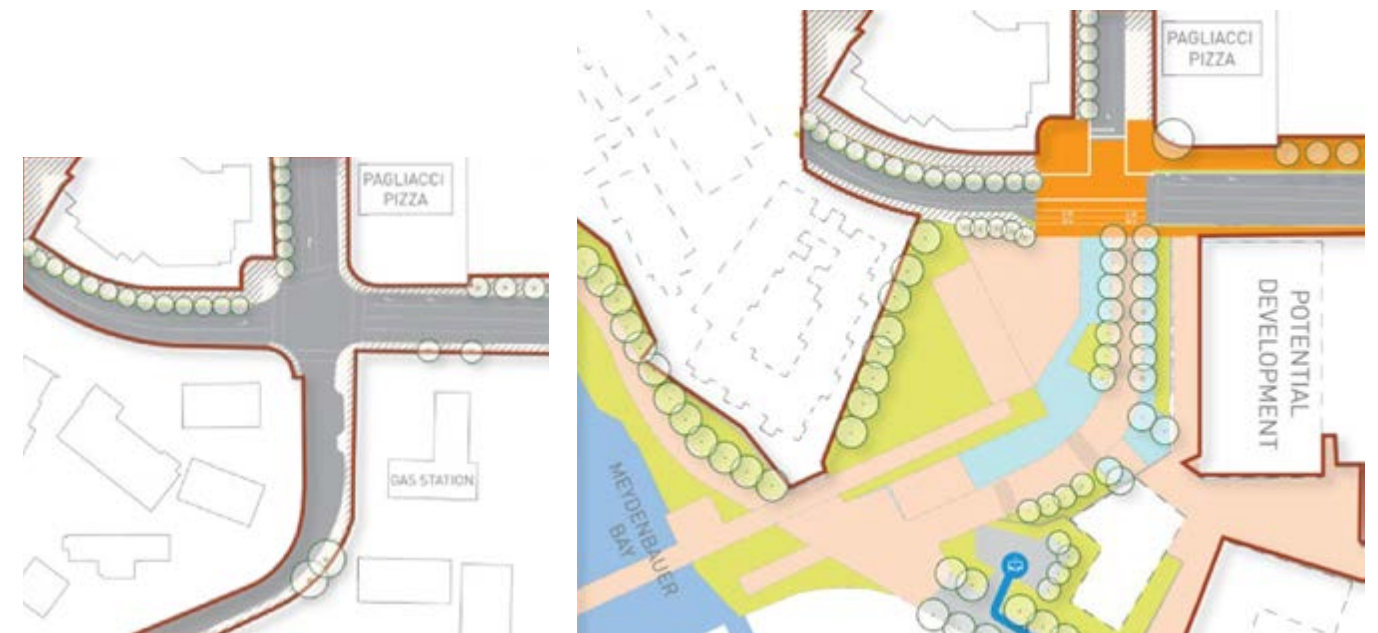


100th Avenue NE and Main Street

Overview

The intersection of 100th Avenue NE and Main Street serves as a gateway to Meydenbauer Bay Park, Old Bellevue, and the Grand Connection. It presents an opportunity to integrate the existing intimate urban fabric of Old Bellevue into the new concept of the Grand Connection and expanded Meydenbauer Bay Park. With sweeping changes coming for Meydenbauer Bay Park, and a beloved surrounding context, the improvements proposed for the intersection of 100th Avenue NE and Main Street focus on aesthetics and an enhanced pedestrian and cyclist experience.

The design team recommends a raised intersection that is articulated with art or unique paving design that gives priority to pedestrian and cyclists. Additionally, it is recommended that modest public spaces be incorporated on the north side of Main Street upon future redevelopment. The combination of the raised intersection and corner public spaces provides a sense of arrival to the urban environment of Bellevue, as well as the Grand Connection route. To assist in the navigating the change in topography to the waterfront a group rapid transit stop could be located at the base of the proposed stairs for those with reduced mobility options.



▲ Existing - 100th Avenue NE and Main Street Intersection Conditions - Image by Balmori Associates

▲ Recommended - 100th Avenue NE and Main Street Improvements with Meydenbauer Bay Park Plan - Image by Balmori Associates



▲ Recommended Improvements at the Intersection of 100th Avenue NE and Main Street - Image by Balmori Associates

Art Opportunities - 100th Avenue NE and Main Street

Vision

The artist's hand is most apparent in Old Bellevue. With its small size and scale buildings and streets, artist designed signs, parklets for busking and temporary artworks in side streets and alleyways give the impression that "creatives were here." Bigger moves, such as an integrated sculpture or fountain at the west end of Main Street, suggest there is more to the neighborhood than meets the eye.

Objectives

- Support events and temporary works of art that will unify the street, lending it a focus
- Increase awareness of close proximity to the Meydenbauer Bay and create a clear and well defined route between Meydenbauer Bay Park and Downtown Park

First Move

Develop programming and evening art walks in collaboration with merchants and property owners to activate the neighborhood during Bellwether 2018.



▲ Red Ball Project- Taipei, Taiwan - Kurt Perschke



▲ Grass Patch Wayfinding - Image Source Sustainable Interior Design



▲ Parklet National Park(ing) Day - Rebar Studio



▲ Museum Zeughaus Wayfinding - Berlin, Germany

Major Art Opportunity

Main Street Fountain

Phase II of Meydenbauer Bay Park will develop 100th Ave NE beginning at Main Street. A large sculpture or artist-designed fountain integrated into the streetscape or park at the intersection of Main Street and 100th Ave NE will provide the visual cue to pedestrians and visitors that there is water and more to see around the corner. An artwork should respond to the historic importance of the site where industry, manufacturing, and business retailing began in Bellevue.

Integrated Artwork

Incorporate small artworks into existing infrastructure, such as light poles, street signs, paving, and seating. Pedestrian can also provide visual interest.

Cultural Plinth

Main Street Program

Create partnership between the City of Bellevue, area merchants and private landowners to develop programming and art opportunities that coincide with existing events and infrastructure and activate the area culturally. Music venues, literary and poetry reading in restaurants and cafes, emerging artists displayed in windows and on the walls will all add to the rich fabric of the neighborhood.

Main Street Parklets

Create temporary parklets that could support both restaurants and small street-side public performance and artistic interventions. These could include parking spaces, storefronts, and intersections.

Minor Points of Interest

Develop a list of potential sites and small spaces for placemaking interventions and 2D artworks. Alleyway walls, utility boxes and traffic poles, and planting strips should all be considered for small but interesting artworks.

Wayfinding

Commission an artist to develop unique and cohesive wayfinding that identifies this location on the Grand Connection route, the proximity of Meydenbauer Bay, immediate cultural amenities, and identifies the adjoining hubs.



▲ **U Street Corridor** - Washington, District of Columbia



▲ **UICS Intersection** - Philadelphia, Pennsylvania - Megan Elliott

Next Steps: 100th Avenue NE and Main

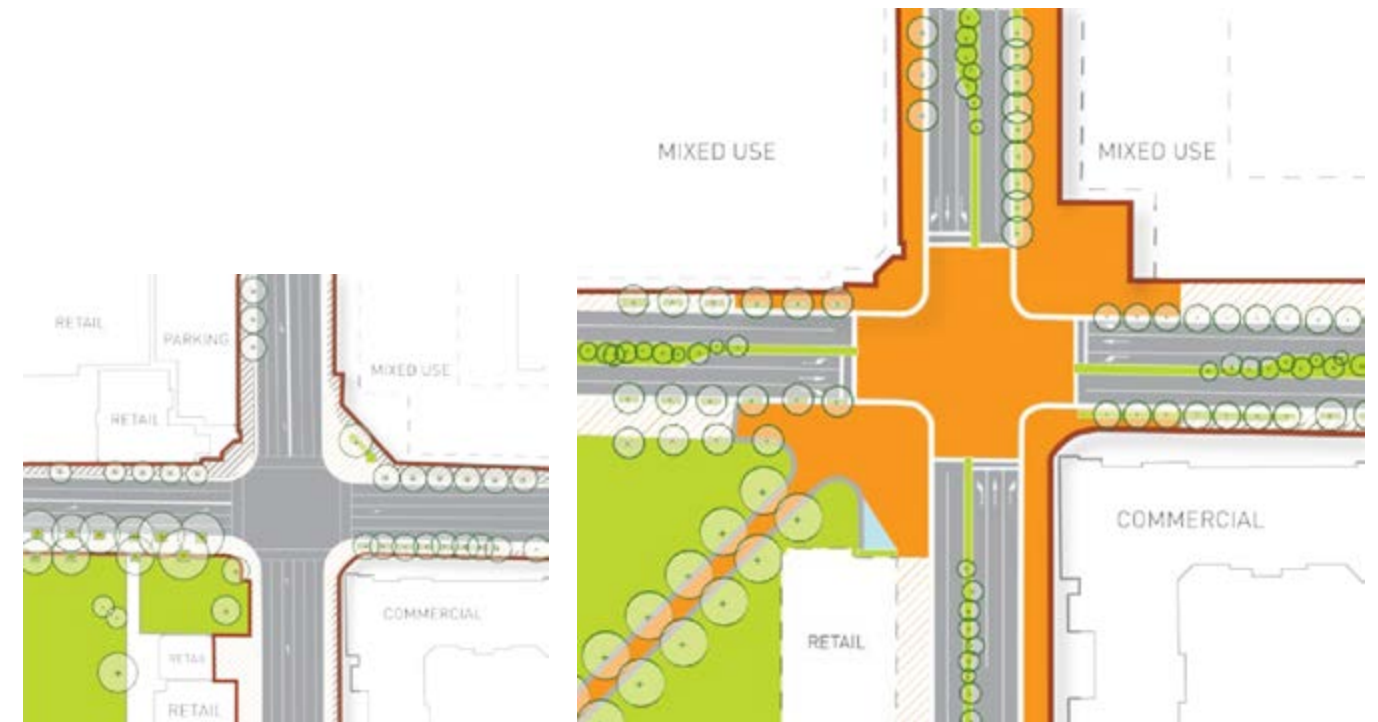
- Identify timeline for the raised intersection.
- Coordinate with future development at the intersection of Main Street and 100th Avenue NE for the provision of a modest public space.
- Identify opportunities for a gateway artistic installation or aesthetic enhancements to the future raised intersection.
- Begin collaborating with property owners and merchants in advance of Bellwether 2018.

Downtown Park - NE 4th and Bellevue Way

Overview

The northeast corner of the Downtown Park is a key gateway for Bellevue and the Grand Connection route. It marks an important transition from Downtown Bellevue into a more intimate environment of the park and ultimately Old Bellevue. The intersection of NE 4th Street and Bellevue Way is also one of the most significant intersections in the city. Currently this corner is lacking a formal entrance to the park with existing entrances further east, mid-block on NE 4th, and a secondary entrance mid-block on Bellevue Way. The design team saw this as an opportunity to create a gateway between this bustling intersection, while preserving the natural and green elements of the Downtown Park.

The design team recommends a small corner plaza at NE 4th Street and Bellevue Way. As a significantly busy intersection this is likely to not be an active public space, so a modest plaza maintains the emphasis on the green elements of the park and avoids introducing excessive hardscape to the urban area. A modest water feature will help to activate the plaza, while also offering a buffer from the sounds of traffic at the intersection. The path into the park is framed by an allee of trees consistent with the existing aesthetic of the park. This concept uses existing city owned land and does not require the acquisition of additional properties.



▲ Existing - Downtown Park Entrance at NE 4th Street and Bellevue Way - Image by Balmori Associates

▲ Recommended - Downtown Park Entrance at NE 4th Street and Bellevue Way (Enlarged) - Image by Balmori Associates



▲ Recommended Improvements to Downtown Park Entrance at NE 4th Street and Bellevue Way - Image by Balmori Associates



▲ Bryant Park - New York, New York - Image by Dandeluca - Flickr

The gateway will provide direct sight lines between Downtown and into the park. The raised intersection at Bellevue Way and NE 4th Street will provide aesthetic continuity between the new plaza, the intersection, and the recently completed minor public open space at the Lincoln Square Expansion development. These strategies will allow the park to serve less as a border to Downtown, but to feel more integrated with the urban fabric.

The allee of trees that form the new entrance to the park will create adjacent spaces that will be more suitable for public gathering and social interaction. These spaces can be programmed and modified to encourage activity that is less passive than the current manicured lawns that exist in these areas. Opportunities exist for seating and gathering that can attract pedestrians from the nearby active urban uses and better integrate into the urban environment.



▲ Entrance Adjacent Areas for Activation

Art Opportunities - Downtown Park

Vision

Art and culture have a designated place in Bellevue's largest urban park. A public art gateway welcomes the world to Bellevue Downtown Park, imprinting the importance of art, culture and design on the thousands of annual visitors that walk through its gates. Diverse neighbors connect with each other at cultural events and art programs at the park's NE entrance throughout the year. Each year, visitors anticipate the temporary artist-designed summer pavilion that provides interactive opportunities to be inspired and build a creative community.

Objectives

- Create a clear and well-marked entrance to Downtown Park at the corner of NE 4th & Bellevue Way NE with a public artwork in the form of a tower or gateway, as an alternative way of marking the entrance to Downtown Park.
- Activate civic space with temporary art exhibitions, performances, music, and other events in the entrance plaza.

First Move

Integrate artists into design team of NE 4th Street entry plaza project to design an entry gateway and raised-intersection at NE 4th Street and Bellevue Way. Commission a temporary summer pavilion at the "Setts" for Bellwether 2018.



▲ Capitol Hill Gateway Proposal - Image by SuttonBeresCuller



▲ Conjoined - Madison Square Park, New York - Roxy Paine



▲ Path of Silence - Norway - Jeppe Hein

Major Art Opportunity

Downtown Park Gateway

Design, fabricate, and install a permanent sculptural tower or gateway to Downtown Park to create a significant entrance to the park at the intersection of NE 4th and Bellevue Way. The gateway should serve as a welcoming beacon to the park as well as a recognizable landmark. The artwork should be highly visible from the street and respond to the design Downtown Park and its surrounding area.

Integrated Artwork

Art Crosswalk at NE 4th Street & Bellevue Way

An artist-designed paving or design for new raised intersection at NE 4th Street and Bellevue Way will create a safe, slow-speed crossing and public space while enhancing the pedestrian environment. An artwork that responds to and designed with the new NE 4th Street entrance and proposed gateway in mind will extend the welcoming effect of the park.

Cultural Plinth

Gateway Plaza

A public gathering space near to the gateway can provide that neighborhood-park feel by supporting community events and other year-round programming including Bellwether activities. This can be activated with little or no impact on other park activities. Regularly scheduled events can include movies in the park, a night market, light projections, and illuminated artworks in the winter, music, dance, and theatrical performances. Artist-designed features such as sculptural seating and lighting will reinforce the artist feel of the plaza.

The Setts

The setts that mark the old school administration building present a unique opportunity to celebrate design and the history of the site as former school. The raised concrete foundation within the circle promenade could serve as a cultural plinth for temporary installations that focus on the intersection of art and architecture such as a temporary summer pavilion where community events and programs are held in conjunction with the Bellwether exhibition.

Minor Points of Interest

Due to the nature of Downtown Park, there is little need to create additional points of interest along the route. Upon completion of the “circle,” an analysis of the area will be performed to recommend any additional wayfinding elements to help identify the Grand Connection route.

Wayfinding

Provide unique and cohesive wayfinding that identifies this location on the Grand Connection route, the immediate cultural amenities, and identifies the adjoining hubs.



▲ **Modified Social Bench - Brooklyn Bridge Park, New York** - Jeppe Hein

Next Steps: Downtown Park NE Entrance

- Coordinate with other City initiatives.
- Design refinement of the gateway, plaza, and supplementary public areas west of the proposed entrance.
- Gateway art installation as part of the park entrance.
- Evaluate the feasibility of raising the intersection at NE 4th Street and Bellevue Way, include design aesthetic.

Downtown Park

Overview

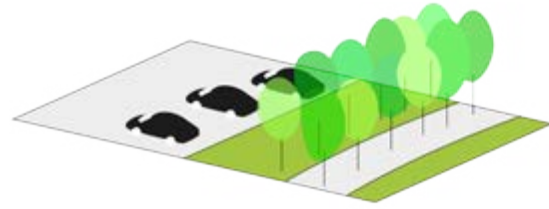
The design team identified several additional long term opportunities to improve the aesthetic and experiential quality of the park, accessibility to the park, and creating a finer grained urban fabric amongst existing uses and the superblock configuration.

- **West Parking Lot** - The west parking lot will be the only remaining surface parking of the Downtown Park. To improve the aesthetic quality and mitigate the visual impacts of the parking lot, the design team recommends creating a berm that would conceal the parking. The berm could become usable green space, while maintaining the existing parking volume.
- **Park Entrance** - The design team studied the park entrance mid-block between Bellevue Way and 100th Avenue NE. Its current configuration creates a visual obstruction to the beauty of open green space of the park with high retaining walls. Additionally there are separate paths into the park for those with reduced mobility options. The recommendation would consolidate all access into the park with an integrated ramp and stair configuration, while removing the wall that diminishes the aesthetic quality of the park's grand expanse and sense of arrival.

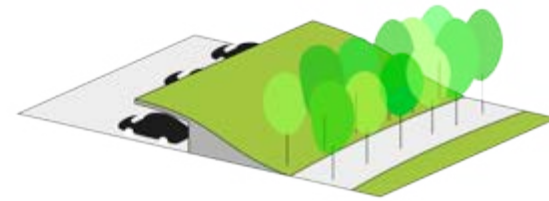


▲ Recommended Long Term Additional Improvements to the Downtown Park - Image by Balmori Associates

West Parking Lot



▲ Existing West Parking Lot Conditions - Downtown Park - Image by Balmori Associates

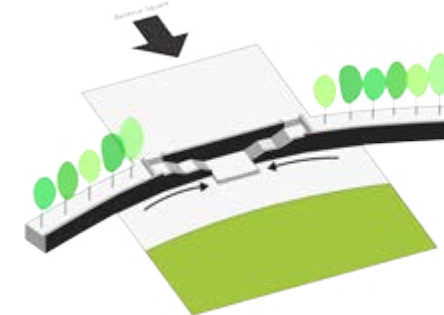


▲ Recommended West Parking Lot Improvement - Downtown Park - Image by Balmori Associates

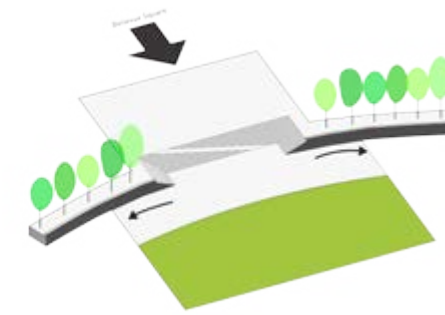


▲ Los Angeles Museum of the Holocaust - Los Angeles, California - Belzberg Architects

Downtown Park Entrance Mid-Block Between Bellevue Way and 100th Avenue NE



▲ Existing Downtown Park Entrance - NE 4th Street Mid Block - Image by Balmori Associates



▲ Recommended Downtown Park Entrance - NE 4th Street Mid Block - Image by Balmori Associates



▲ Chicago Riverwalk - Chicago, Illinois - Ross Barney Architects

Next Steps: Downtown Park

- Explore the feasibility of the additional Downtown Park improvement ideas.
- Coordinate with other City initiatives such as park improvements.

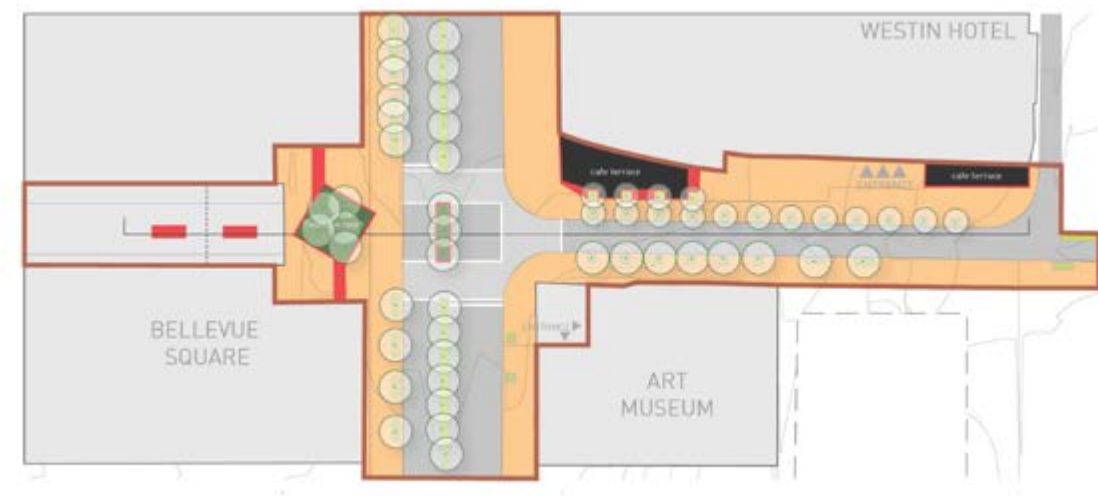
Pedestrian Corridor

Overview

The “Street as Plaza” segment of the Pedestrian Corridor has the potential to be a high energy public space. Assets such as Bellevue Square, Bellevue Arts Museum, and the restaurant, nightlife, and residences of Lincoln Square and Lincoln Square Expansion create tremendous potential for an engaging urban environment. This area is also a key gateway for patrons of Bellevue Square and Bellevue Arts Museum.

The design team approached this area as an opportunity to create a festival style street that is flexible in its use. With existing outdoor dining and cafe opportunities, the design team saw an opportunity to better integrate them into the public realm. As a low volume street, and only one lane east of 105th Avenue NE, a significant amount of space is dedicated to automobile traffic for a predominately pedestrian environment.

The design team provided two options in an effort to address some of the challenges in the immediate area, and to create new opportunities to assist in fulfilling the vision of Street as Plaza. Each strategy attempts to mitigate impact of automobiles and open this segment of the Grand Connection to the high volume of pedestrians that do and will use the space on a daily basis.



▲ Recommended Areas for Improvements on the Pedestrian Corridor - Image by Balmori Associates

Option One

Option one focuses on modest improvements that would improve the transition between public and private space, while creating more area for programming and engagement with the surrounding developments.

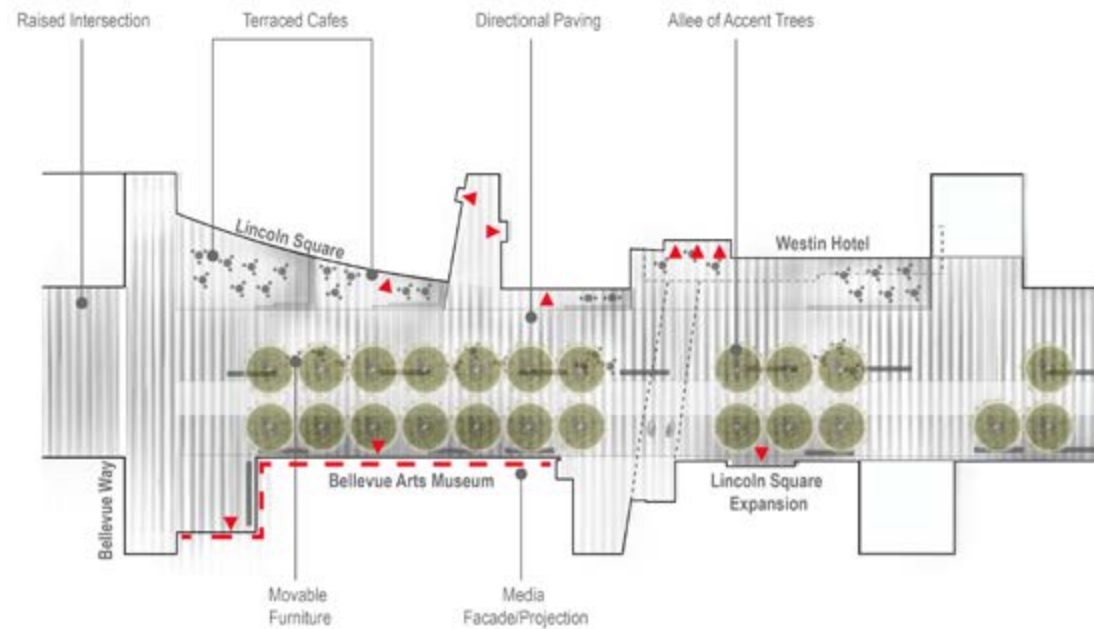
This options seeks to reduce the grade difference between the current terraced cafe and the public realm. As an alternative, the design team has proposed a series of terraced cafes to reduce the amount of blank wall facing the public realm and reduce the grade difference. Much like the raised intersections, it is also recommended that the curbs are removed to create a seamless surface and enhance the sense of a “street as plaza.” The raising of the street will assist in maintaining slow speeds on NE 6th Street and creates opportunities for it to serve as a festival street.

Through public comment and the design charrette, several comments were received regarding the museum engaging with the Pedestrian Corridor. The design team also encourages the activation of the museum’s blank facades through projected media and art. This would create a dynamic installation that is regularly changing, engaging, and responding to the people and energy that this intersection produces.

The paving strategy is consistent with strategies one and two, found in Chapter 5, *Cohesive Design Strategies*, with permeable and directional paving.



▲ **Passeig de St. Joan - Barcelona, Spain - Lola Domenech**



▲ **Option One Recommendation for the Pedestrian Corridor - Plan - Image by Balmori Associates**



▲ **New Road - Brighton, United Kingdom - Gehl Institute**



▲ **Directional Paving- Image by Persio Pucci**



▲ **Option One Recommendation for the Pedestrian Corridor - Section - Image by Balmori Associates**



▲ **Enlarged Paving Strategy Plan - Image by Balmori Associates**

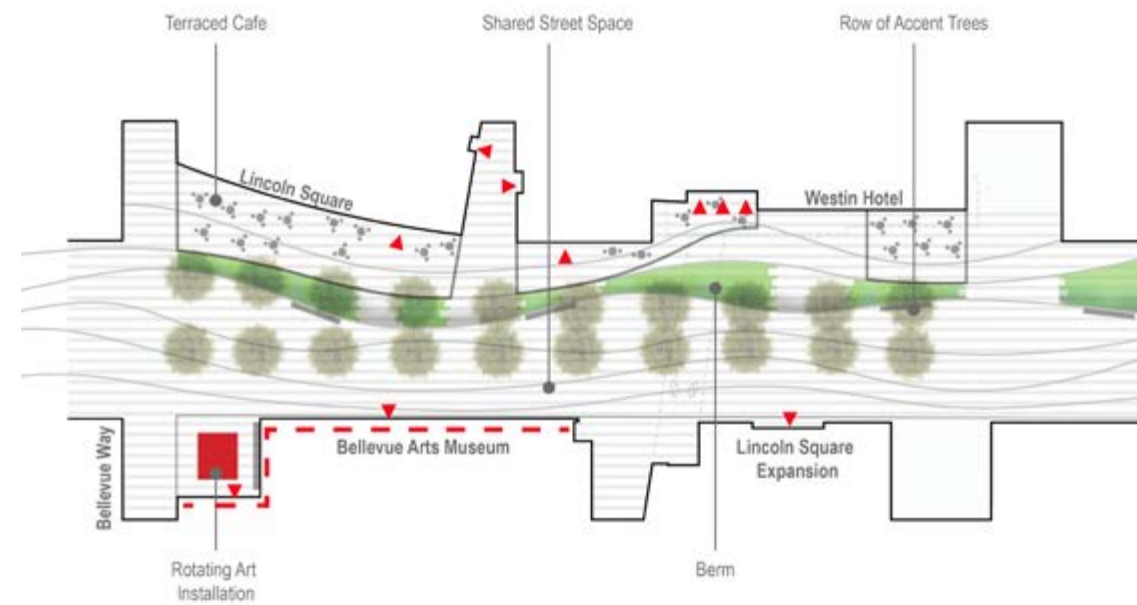
Option Two

The second option considers many of the same strategies as option one, including raising the street surface and softening the transition between the outdoor dining areas and the public realm. The primary difference in the method of addressing the change in grade between the outdoor dining and the paving strategy.

Rather than using stepped terraces the design team created a gentle rolling berm to address the change in grade between the public realm and outdoor activities. The berm creates an opportunity to integrate additional greenspace into the urban environment, while creating a unique aesthetic and experience. This berm would change in width and form as it weaves through the corridor and would integrate hard and softscape. The weaving form also allows for the staggering of street trees, making for a more dynamic visual impact.

The paving strategy for this option uses elements of all three of the previous strategies, found in Chapter 5, *Cohesive Design Strategies*. The berm creates a ribbon of softscape, interrupted by integrated urban amenities and hardscape. The fluidity of the paving pattern and ribbon also create a sense of direction for pedestrian movements.

At the Bellevue Arts Museum, the design team recommended a large scale rotating art installation. This differs from option one in that it relies on an impact art installation on the corner plaza that would be changed periodically, creating a different visual impact than interactive or projected media.



▲ Option Two Recommendation for the Pedestrian Corridor - Plan - Image by Balmori Associates

Next Steps: Pedestrian Corridor

- Select a preferred alternative for the Pedestrian Corridor.
- Refine the design and consider impacts and opportunities with City initiatives and private development improvements.
- Explore location and opportunities for a cultural plinth.



▲ Option Two Recommendation for the Pedestrian Corridor - Section - Image by Balmori Associates



▲ Enlarged Paving Strategy Plan - Image by Balmori Associates

Art Opportunities - Pedestrian Corridor

Vision

The block on NE 6th Street between Bellevue Way and 106th Ave NE is the most active street in Bellevue. It is the center of Downtown Bellevue's cultural life and people come to see and be seen. It is flanked at either end by regional cultural and retail destinations that attract people 18 hours a day with high quality, signature art and cultural events. The Grand Connection is activated by a constant stream of people drawn westward by a new monumental sculpture at the entrance to Bellevue Square Mall while the energy from Compass Plaza and the Transit Center just beyond pulls people to the east.

Objectives

- Create a dynamic, engaging center of the city where people want to be.
- Activate existing infrastructure and plaza with diverse cultural programming.

First Move

Claim the Street as Plaza and turn it into a Cultural Plinth. Build upon the successful Snowflake Lane event held annually in December by relocating the Bellevue Arts Museum ARTSFair held annually in July to Bellevue Way.



▲ Canopy at Centene Plaza - Clayton, Missouri - Liam Gillick



▲ Erie Street Plaza - Milwaukee, Wisconsin - Image by StossLU

Major Art Opportunity

Bellevue Way Beacon

Bellevue's signature art institution – the Bellevue Arts Museum – and event – Snowflake Lane – are located at the corner of Bellway Way and NE 6th Street. A new signature sculpture at the entrance to Bellevue Square Mall will reinforce the cultural importance of this location. The scale of the artwork should be considerable so it can serve a cross-town beacon, easily viewed from the Bellevue Transit Station and the Eastside Rail Corridor.

The NE 6th Street Canopy

As a vital link between the Bellevue Connection and Compass Plaza to the east and Bellevue Arts Museum and Bellevue Square Mall to the West, an artist-designed canopy will turn the current “pass-through” into a signature promenade. This opportunity will need a close partnership with private development as the properties redevelop in the future.

Integrated Artwork

Street Subtleties

While the Street as Plaza will be marked by big art moves that advance the exceptional identity of this area as the center of Downtown Bellevue's cultural life, a series of small scale, discoverable sculptures and artist treatments in the paving and sidewalk provide the fine grain artist touch that make the space feel “lived in” and diverse.

Art Crosswalk at Bellevue Way & NE 6th Street

An artist-designed paving or design for the new raised intersection at NE 6th and Bellevue Way will create a safe, slow-speed crossing and public space while enhancing the pedestrian environment. An artwork that responds to the signature events that occur at this location such

as Snowflake Lane will generate anticipation long before these special events and extend the impact and memories long after they're gone.

Street Furniture

Turn NE 6th Street into a regional center for design with artist-designed street furniture. In conjunction with the NE 6th Street Canopy, new and unique lighting and sculptural seating will turn NE 6th Street into a showroom for design. New partnerships between the City of Bellevue, private land owners and the design community could support ongoing digital art projections on building facades.

Street Furniture

Turn NE 6th Street into a regional center for design with artist-designed street furniture. In conjunction with the NE 6th Street Canopy, new and unique lighting and sculptural seating will turn NE 6th Street into a showroom for design. New partnerships between the City of Bellevue, private land owners and the design community could support ongoing digital art projections on building facades.

Cultural Plinth

6th Street Market

NE 6th Street itself becomes the cultural plinth with “plug and play” infrastructure to support a diverse range of events and community groups including the Bellevue Arts Museum ARTSFair and the Bellevue Downtown Association Live at Lunch concert series. As surrounding property redevelops, dedicating storefront and lobby spaces to cultural uses such as art galleries, performance space, murals, and public art will make this the cultural heart of Downtown Bellevue.

Compass Plaza

Overview

Compass Plaza is the geographic center of Downtown Bellevue. The plaza is currently used for a number of smaller activities such as the Bellevue Downtown Association's *Live at Lunch* concert series, outdoor seating, a restaurant kiosk, and art installations. Additionally, there are other uses around the area that assist in activating the plaza such as the nearby food trucks and events and activities at the neighboring Doxa Church facility. Seasonal and special events occur in and around Compass Plaza, including the Bellevue Arts Fair and the Saturday farmers market.

The properties that surround Compass Plaza are some of the more underdeveloped parcels in Downtown Bellevue. Bellevue Connection, formerly The Galleria, is a three story retail and office development, adjoining the existing Compass Plaza. To the north are single story large scale developments such as a Barnes & Noble and the Doxa Church facility. To the west are two parking lots, one of which supports the PACCAR corporate headquarters, and a single story California Pizza Kitchen.

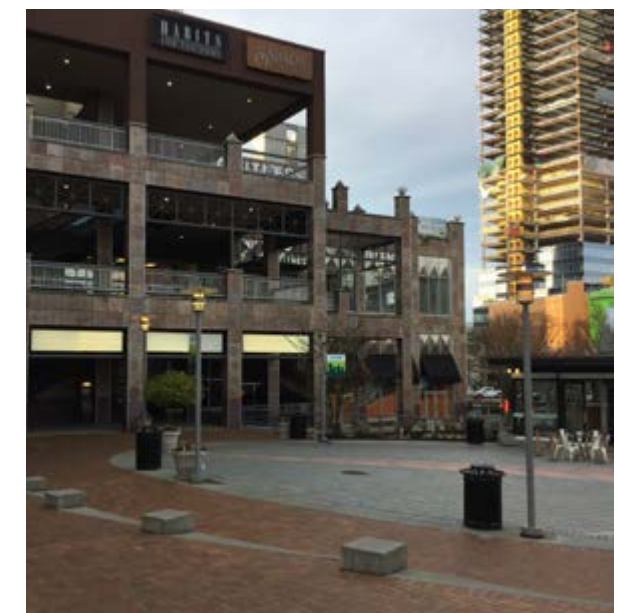
Given the underutilization of the parcels to date, this represents an ideal time to establish a long term vision for Compass Plaza prior to redevelopment. The properties to the east of 106th Avenue NE are conditioned, as part of the Land Use Code and Pedestrian Corridor requirements, to maintain and expand the public realm. Compass Plaza's location and surrounding contextual potential afford tremendous opportunities to revision the plaza as a dynamic and vibrant public space, supportive of a multitude of uses, activities, and programming.

Topography Challenges

The current configuration of Compass Plaza is challenged by its need to address the topographic challenges of the immediate area. A series of terraces, steps, and ramps allow the space to ascend from 106th Avenue NE to 108th Avenue NE. Several paths exist, including the separation of the accessible route for those with limited mobility options.

Fragmented Public Spaces

The existing response to the changes in grade have created a series of spaces that are too large to be intimate and too small to be programmed effectively. The form of the spaces are constricted by the various stairs and ramps, and have also created spaces that are irregular in form, adding to their difficulty of being programmed effectively.



▲ Compass Plaza - Existing

Creating a Fluid and Flexible Space

The design team has proposed a solution that integrates ramp and stair circulation at a single location while creating opportunities for amphitheater style seating.

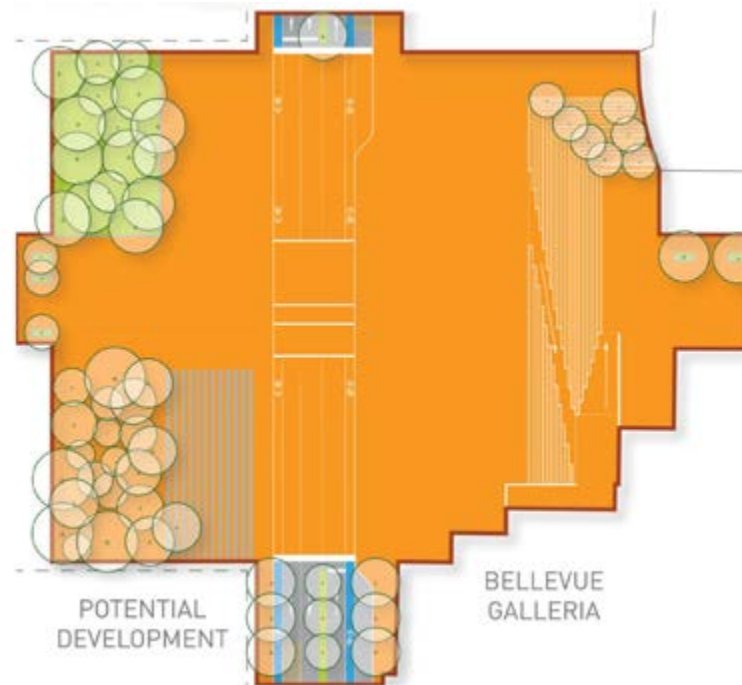
The location of the proposed circulation allows for the development of an open forum for flexible programming, and regular and seasonal events. The proposal expands the plaza to the north, consistent with current redevelopment requirements, and also considers expanding the plaza to the west. The eastern portion creates room and flexibility for a permanent home for the farmer's market, space for the food trucks in a people-oriented forum, and installations for art and water features.

Consistent with the widening of the Pedestrian Corridor, the area to the east of the plaza would integrate linear weather protection and opportunities for enhanced vegetation, seating, and play areas. This could offer a secondary public space to the primary plaza area.

To the west opportunities exist for a regional showcase of vegetation, to provide respite from the urban environment, as well as play structures, seating, and performance or pavilion space to exhibit local art and businesses. The two sides would be seamlessly integrated via a raised intersection so that during events such as the Arts Fair, and 106th Avenue NE is closed to traffic, the entire space would feel and operate as a contiguous public space. A portion of the raised intersection is currently in design as part of an early implementation strategy for the Grand Connection.



▲ **Compass Plaza Plan - Existing** - Image by Balmori Associates



▲ **Compass Plaza Plan - Proposed (Enlarged)** - Image by Balmori Associates

The recommendation, in its entirety, could be approached as a phased implementation strategy that is flexible and can be adapted over time as properties transition and new opportunities are identified. As one of the largest and most sweeping changes in the recommendations, it is an opportunity to re-imagine the center of Downtown with a dynamic and flexible public space for events, the arts, and social engagement.

As part of the Downtown Transportation Plan the intersection of NE 6th Street and 106th Avenue NE is in design to be raised. The length of this raised intersection could be extended in the future to be consistent with the width of a future Compass Plaza reconfiguration.



▲ **Compass Plaza Plan Aerial - Proposed** - Image by Balmori Associates

▼ **(Next Page) Compass Plaza Perspective - Proposed** - Image by Balmori Associates



Art Opportunities - Compass Plaza and Garden Hill Climb



▲ **Doxa Church Area of Activation** - Image by SuttonBeresCuller



▲ **Painted Intersections Project - Fort Lauderdale, Florida** - Robert Haines Merrill



▲ **Skies Painted with Unnumbered Sparks** - Janet Echelman

Vision

Art and cultural programs at Compass Plaza and the Garden Hill Climb are designed to bring the community together and linger awhile. As the heart of Bellevue's most urban neighborhood, a variety of day and nighttime activities turn Compass Plaza from a cultural hub into a cultural and entertainment destination that compliments the "entertainment street" designation of 106th Avenue. New cultural plinths for ongoing temporary small-scale projects and performances make it easy to invite community interaction and build connections.

Objectives

- Construct and maintain 3 new cultural plinths for temporary, event-based art and cultural presentations.
- Create a year-round, 18 hour a day cultural destination by supplementing current daytime activities with nighttime artworks and activities.
- Expand partnerships with private property owners to enhance and activate the pedestrian corridor with visual art, color, and activities.

First Move

Integrate an artist into design team to develop the Art Crosswalk at 106th Avenue. Colorful artistic treatments will enhance Bellevue's identity as a fun, dynamic pedestrian friendly destination. The expected life span of these artworks should be 3-5 years and use appropriately durable materials such as MMA (Methyl Methacrylate) that lasts approximately 7-10 years. Paint is not recommended. This gives an opportunity for a number of artists and artworks over time and supports the programmable, flexible, and curate-able vision of the Grand Connection.

Major Art Opportunity

The Lights at Compass Plaza

As Compass Plaza redevelops, a new signature sculpture will anchor this public space as a year round, 18 hour a day cultural destination. An artwork that incorporates light and innovative materiality will add to its urban character and could be integrated into the surrounding buildings on the plaza edge or within the public space. If Compass Plaza expands, it will be important to consider an artwork that matches the new scale of the public space.

Integrated Artwork

Art Crosswalk at 106th Avenue NE

An artist-designed paving or design for the new raised intersection at 106th Avenue adjacent to Compass Plaza will create a safe, slow-speed crossing and public space while enhancing the pedestrian environment. A colorful artwork incorporated into this new raised intersection will add to the "outdoor gallery" feel established in the Garden Hill Climb. This also provides a visual, colorful impact when looking down onto the city streets from the office towers above.

Cultural Plinth

Garden Hill Murals

A number of large walls that currently face the Pedestrian Corridor and could host large-scale murals including a semi-permanent installation on the south-facing wall of DOXA Church and a rotating art wall on the north-facing wall of All American Eyeglass Repair building for young and emerging artists. These murals could include a range of mediums from paintings to night-time digital projections.

Art Row

As one of the only sites where the Grand Connection is completely separated from car traffic, the Garden Hill Climb provides a unique opportunity for an intimate public art experience. Empty storefronts at the Bellevue Connection can be activated with artists' studios, performance, and event spaces. Installations and presentation of visual artworks can be displayed in windows, on top of the existing awnings, and in the planting strip. Outdoor display cases could provide emerging artists with a venue to exhibit artwork in rotating exhibitions.

Eastside Kitchen

Turn Compass Plaza into a center for food culture by establishing a year-round farmers and food market. Partnerships with existing kitchens such as the Homegrown Sustainable Sandwiches and the former Rock Bottom Brewery could host guest chefs and cooking demonstrations. A permanent place for food trucks with electrical outlet access and artists-designed seating could extend food options well into the evening hours cultivate a vibrant café culture.

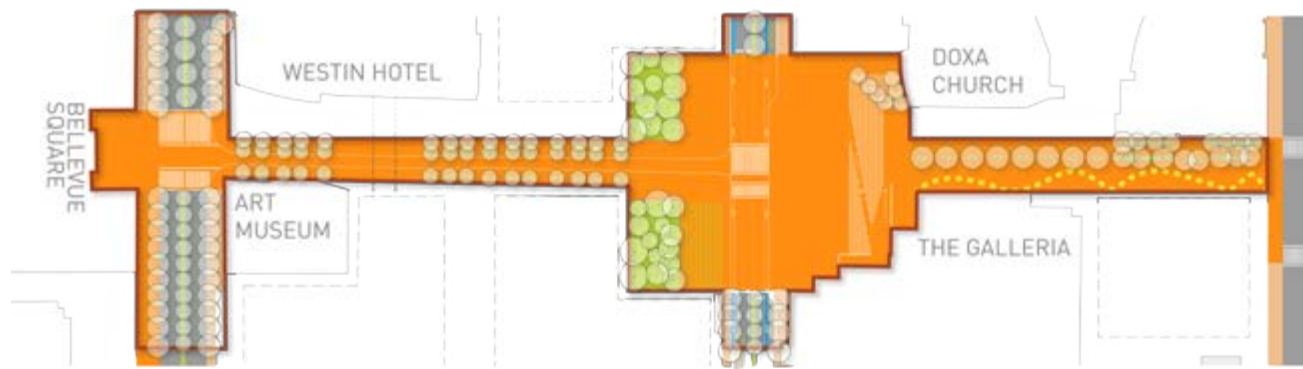
Minor Points of Interest

Art Screen

Install temporary art installations and performance spaces that visually delineate the parking lot at DOXA Church from the pedestrian space.

Wayfinding

Provide unique and cohesive wayfinding that identifies this location on the Grand Connection route, the immediate cultural amenities, and identifies the adjoining hubs.



▲ Pedestrian Corridor from Bellevue Way to 108th Avenue NE - Concept- Image by Balmori Associates

Next Steps: Compass Plaza

- Design refinement and phasing approach for the Compass Plaza reconfiguration, including materials, programming, and art installations.
- Explore the opportunity to expand the plaza to the west as a long-term strategy.
- Explore opportunities to collaborate and partner with private development improvements and City initiatives.
- Engage in tactical urbanism events to test and demonstrate potential future improvements.
- Explore programming and cultural plinth opportunities.

Art Opportunities - Bellevue Transit Center and Civic Center

Vision

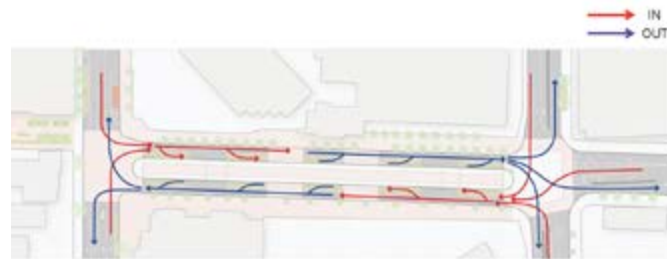
No one ever just waits for a bus or the train; they engage. Bellevue Corporate Plaza, City Hall, Meydenbauer Center, and the Transit Station work together as the city's primary cultural hub, providing a place for civic engagement of all forms and opportunities to experience arts and cultural events year round. Bellevue's story is constantly being explored through many iconic public artworks, rotating community exhibitions, and cultural programs in the lobbies of City Hall and Meydenbauer Center.

Objectives

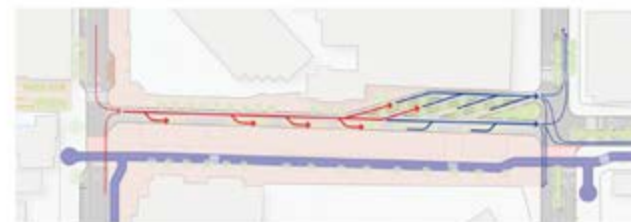
- Utilize artist-designed building elements to create physical and visual distance between sights and sounds of busses.
- Develop the Civic Center as a "people hub" with strong artistic and cultural elements. Reimagine and re-design transit center for the general public while encouraging increased use of public transit.

First Move

Collaborate with Meydenbauer Center to develop the Stoop and programming specific to the Grand Connection within the lobby. Expand Storefronts program at Meydenbauer Center to utilize all of the windows and doors from the parking garage to the corner of NE 6th and 112th NE. The program currently only utilizes a few window mid-block. Between the parking garage entrance and the main steps. The windows and doors on the corner of NE 6th St and 112th Ave NE are additional opportunities.



▲ Existing Movements at the Transit Center - Image by Mobility and Chain



▲ Proposed Movements at the Transit Center - Image by Mobility and Chain



▲ Meydenbauer Convention Center Activation - Image by SuttonBeresCuller



▲ Van Gogh Bike Path - Eindhoven, Netherlands - Studio Roosegaarde



▲ Subterraneum - Seattle, Washington - Leo Saul Berk

Major Art Opportunity

Transit Center Roof

The roofline of the Bellevue Transit Center is a defining feature of the civic center. Artists could illuminate both the interior and exterior of the Transit Center with color and lighting elements that change and respond to the season and important community events in the civic plaza.

Integrated Artwork

Pedestrian art enhancements

Partner with Sound Transit, King County Metro, and other stakeholders to identify opportunities for public art enhancements, such as a new raised intersection or sidewalk treatments for pedestrian crossings to help unify these spaces into one.

The Stoop

Further the identity of Meydenbauer Center as an important public place by incorporating artwork, color, and lighting into a redesigned entryway and steps. Continue to utilize and activate the window space at the Meydenbauer Center along NE 6th Street for rotating exhibitions.

Cultural Plinth

Civic Plaza

Strengthen Bellevue's civic identity by coordinating cultural programming such as night markets, craft vendors, and food trucks at the Bellevue Corporate Plaza, City Hall Plaza, and Microsoft City Center Plaza. Regular events and markets across all three spaces will soften the corporate profile of this important civic place and transform the area into a welcoming destination that celebrates people and culture while encouraging alternative forms of transportation.

Civic Galleries

Utilize the City Hall and Meydenbauer Center lobbies for ongoing exhibitions of community arts, local artists, and area cultural organizations. These spaces are important community spaces that provide the general public a platform to participate in the civic dialogue and excitement of the Grand Connection.

Minor Points of Interest

Small scale, discoverable sculptures, including paving and sidewalk treatments.

Wayfinding

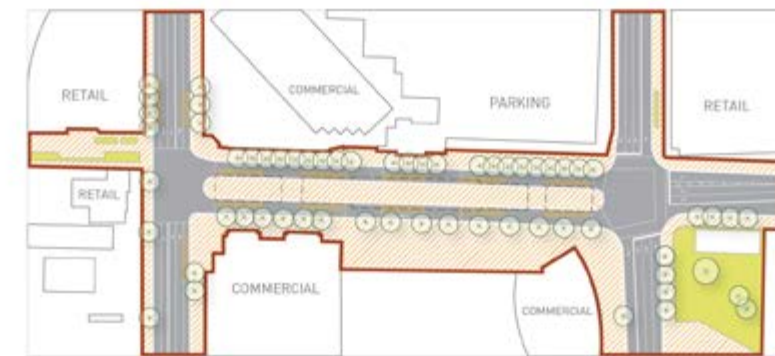
Provide unique and cohesive wayfinding that identifies this location on the Grand Connection route, the immediate cultural amenities, and identifies the adjoining hubs. With the upcoming Sound Transit Light Rail addition this will be a unique opportunity to get people to explore the Grand Connection.



▲ Pioneer Courthouse - Portland, Oregon

Next Steps: Bellevue Transit Center

- Explore opportunity to advance a reconfiguration plan for the Bellevue Transit Center with local and regional transit agencies.
- Study potential impacts of existing and future bus routes.
- Refine the design of the Bellevue Transit Center proposal including cohesive design strategies, interface of cyclist and group rapid transit opportunities, and programming.



▲ Existing Bellevue Transit Center Configuration - Image by Mobility and Chain



▲ Proposed Bellevue Transit Center Configuration (without angled bays) - Image by Mobility and Chain